



2023-2024 #23

(2. CADET FEMENÍ)

Season report (created on Feb 23, 2024)



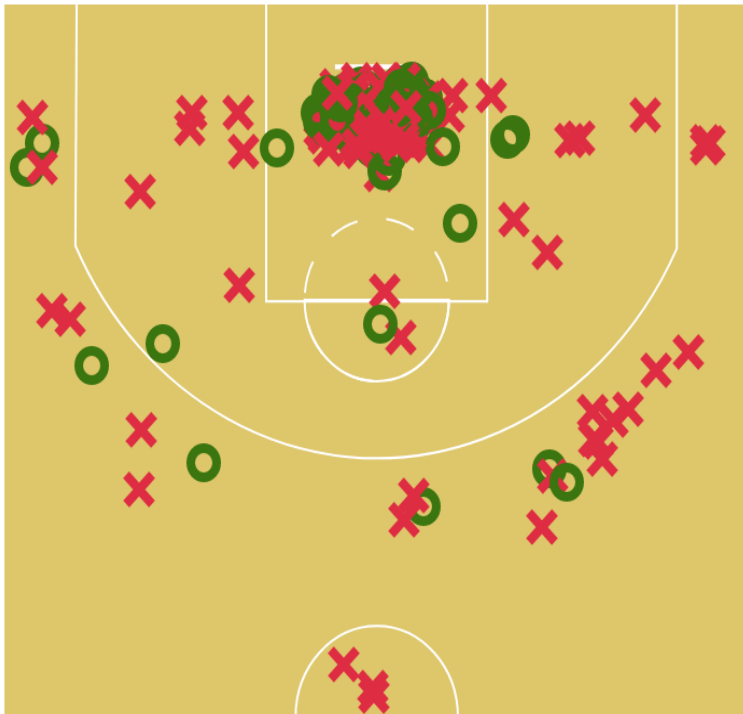
Basketball Stats  
Assistant

Overall Record: 14-16

Home Record: 6-10

Away Record: 8-6

### Season Shot chart



**137-297**

Field goals

**7-31**

3 pointers

**130-266**

2 pointers

**82-151**

Free throws

**46.1**

FG %

**22.6**

3PTS %

**48.9**

2PTS %

**54.3**

FT %

## Results Box score

Opponent	Date	Site	W/L	PF-PA	MIN	PTS	FG		3PTS		2PTS		FT		Rebounds										+/-				
							FGM-FGA	FG%	3PM-3PA	3P%	2PM-2PA	2P%	FTM-FTA	FT%	OREB	DREB	REB	AST	TOV	STL	BLK	SR	PF	PFD		PIR	EFF		
3. BARÇA CBS-B	10/23/21	Home	L	38-101	11:50	4	2-5	40.0%	0-0	0.0%	2-5	40.0%	0-0	0.0%	0	4	4	0	3	0	0	0	2	0	0	2	0	2	-26
5. FEMENI MARESME UEB B	11/6/21	Away	W	51-43	14:45	6	1-6	16.7%	0-0	0.0%	1-6	16.7%	4-6	66.7%	2	1	3	1	1	2	0	0	0	4	8	4	8		
4. NAYOX CBF LLEIDA	11/13/21	Home	W	82-50	17:04	10	4-11	36.4%	1-3	33.3%	3-8	37.5%	1-1	100.0%	5	2	7	1	2	2	0	0	0	1	12	11	14		
1. CB GRUP BARNÀ VERMELL	11/27/21	Home	L	55-60	26:53	19	7-7	100.0%	0-0	0.0%	7-7	100.0%	5-7	71.4%	3	5	8	0	2	2	1	0	2	5	29	26	3		
2. CADET FEMENÍ	12/12/21	Home	L	55-62	25:55	13	6-13	46.2%	0-1	0.0%	6-12	50.0%	1-2	50.0%	3	6	9	1	1	3	2	0	0	1	20	19	17		
7. CB CORNELLÀ B	12/19/21	Home	W	61-46	23:20	9	4-7	57.1%	0-0	0.0%	4-7	57.1%	1-2	50.0%	2	4	6	1	3	1	0	0	1	1	10	10	6		
6. LLUISSOS DE GRACIA B	1/22/22	Home	L	61-73	13:12	16	6-12	50.0%	0-2	0.0%	6-10	60.0%	4-5	80.0%	2	4	6	2	0	2	0	0	3	4	20	19	8		
3. BARÇA CBS-B	1/30/22	Away	L	29-77	14:13	2	1-9	11.1%	0-4	0.0%	1-5	20.0%	0-0	0.0%	2	3	5	0	4	0	0	0	4	1	-8	-5	-8		
5. FEMENI MARESME UEB B	2/5/22	Home	W	78-35	16:41	16	6-9	66.7%	1-1	100.0%	5-8	62.5%	3-5	60.0%	2	2	4	3	2	2	1	0	1	4	22	19	21		
2. CADET FEMENÍ	2/12/22	Home	L	48-54	23:28	20	9-21	42.9%	0-3	0.0%	9-18	50.0%	2-5	40.0%	3	4	7	2	5	4	0	0	0	4	17	13	15		
2. CADET FEMENÍ	2/26/22	Home	L	39-44	28:09	17	5-11	45.5%	0-1	0.0%	5-10	50.0%	7-10	70.0%	2	4	6	0	10	6	3	0	4	5	14	13	19		
2. CADET FEMENÍ	3/6/22	Home	W	69-64	20:42	9	3-5	60.0%	0-0	0.0%	3-5	60.0%	3-6	50.0%	1	1	2	1	2	2	1	0	2	4	10	8	8		
2. CADET FEMENÍ	3/19/22	Home	L	57-73	30:37	23	9-14	64.3%	1-3	33.3%	8-11	72.7%	4-8	50.0%	4	7	11	3	1	3	2	0	2	6	36	32	14		
LIMA-HORTA BÀSQUET	3/27/22	Home	L	36-39	15:31	5	1-4	25.0%	0-1	0.0%	1-3	33.3%	3-10	30.0%	7	6	13	0	4	3	0	0	3	5	9	7	3		
2. CADET FEMENÍ	4/3/22	Home	W	64-56	20:13	9	4-9	44.4%	0-3	0.0%	4-6	66.7%	1-3	33.3%	1	3	4	1	6	3	0	0	2	5	7	4	2		
<b>Total</b>					<b>580:30</b>	<b>363</b>	<b>137-297</b>	<b>46.1%</b>	<b>7-31</b>	<b>22.6%</b>	<b>130-266</b>	<b>48.9%</b>	<b>82-151</b>	<b>54.3%</b>	<b>90</b>	<b>110</b>	<b>200</b>	<b>40</b>	<b>99</b>	<b>61</b>	<b>20</b>	<b>0</b>	<b>66</b>	<b>110</b>	<b>400</b>	<b>356</b>	<b>117</b>		
<b>Average</b>					<b>19:21</b>	<b>12.1</b>	<b>4.6-9.9</b>	<b>46.1%</b>	<b>0.2-1.0</b>	<b>22.6%</b>	<b>4.3-8.9</b>	<b>48.9%</b>	<b>2.7-5.0</b>	<b>54.3%</b>	<b>3.0</b>	<b>3.7</b>	<b>6.7</b>	<b>1.3</b>	<b>3.3</b>	<b>2.0</b>	<b>0.7</b>	<b>0.0</b>	<b>2.2</b>	<b>3.7</b>	<b>13.3</b>	<b>11.9</b>	<b>3.9</b>		

Results Box score																											
							FG	3PTS	2PTS	FT	Rebounds																
Opponent	Date	Site	W/L	PF-PA	MIN	PTS	FGM-FGA	FG%	3PM-3PA	3P%	2PM-2PA	2P%	FTM-FTA	FT%	OREB	DREB	REB	AST	TOV	STL	BLK	SR	PF	PFD	PIR	EFF	+/-
ADIVISORIA MATARÓ MARESME 2007	4/9/22	Home	L	55-78	13:05	6	1-4	25.0%	1-2	50.0%	0-2	0.0%	3-6	50.0%	1	3	4	1	6	5	1	0	0	3	8	5	-11
Azulejos Moncayo CBZ	4/10/22	Home	L	73-79	27:01	27	10-14	71.4%	1-1	100.0%	9-13	69.2%	6-11	54.5%	7	6	13	3	1	0	0	0	4	8	37	33	5
2. CADET FEMENÍ	4/11/22	Home	W	65-44	27:32	12	4-11	36.4%	0-0	0.0%	4-11	36.4%	4-4	100.0%	2	4	6	5	5	2	1	0	1	3	16	14	-9
Torrelodones B	4/11/22	Home	L	41-76	14:15	9	2-5	40.0%	0-0	0.0%	2-5	40.0%	5-7	71.4%	3	4	7	1	3	0	0	0	2	5	12	9	-22
Marianistas	4/12/22	Away	W	59-57	20:26	7	3-12	25.0%	0-0	0.0%	3-12	25.0%	1-5	20.0%	3	6	9	3	3	0	0	0	2	3	4	3	7
BUrgos	4/12/22	Away	W	63-44	13:03	12	5-12	41.7%	1-1	100.0%	4-11	36.4%	1-4	25.0%	4	2	6	1	1	1	1	0	2	4	12	10	15
Azulejos Moncayo CBZ	4/13/22	Home	L	47-55	21:16	13	6-16	37.5%	0-1	0.0%	6-15	40.0%	1-8	12.5%	4	4	8	0	3	2	0	0	4	4	3	3	-2
AE MINGUELLA C-DRIVIM	4/23/22	Home	W	53-36	16:43	12	6-9	66.7%	0-0	0.0%	6-9	66.7%	0-0	0.0%	0	6	6	1	5	3	1	0	2	3	16	15	18
7. CB CORNELLÀ B	5/1/22	Home	W	65-52	21:16	24	8-13	61.5%	1-1	100.0%	7-12	58.3%	7-9	77.8%	7	6	13	2	1	4	1	0	2	5	39	36	28
2. CADET FEMENÍ	5/8/22	Home	W	63-48	15:28	8	4-8	50.0%	0-0	0.0%	4-8	50.0%	0-0	0.0%	3	1	4	1	4	2	2	0	5	1	5	9	-5
CLUB JOVENTUT DE BADALONA B	5/14/22	Home	L	44-103	15:35	9	3-9	33.3%	0-0	0.0%	3-9	33.3%	3-4	75.0%	0	3	3	0	5	0	0	0	4	3	-1	0	-21
2. CADET FEMENÍ	5/21/22	Home	W	59-48	12:50	1	0-5	0.0%	0-0	0.0%	0-5	0.0%	1-2	50.0%	0	3	3	2	3	2	1	0	5	1	-4	0	-5
2. CADET FEMENÍ	5/29/22	Home	L	54-59	21:16	13	5-13	38.5%	0-1	0.0%	5-12	41.7%	3-5	60.0%	8	2	10	4	3	3	0	0	1	6	22	17	7
Femeni Sant Adria	6/11/22	Home	L	57-70	13:37	5	2-5	40.0%	0-1	0.0%	2-4	50.0%	1-2	50.0%	2	3	5	0	8	0	0	0	3	2	-3	-2	-7
Manresa CBF	6/12/22	Home	W	70-62	24:19	27	10-18	55.6%	0-1	0.0%	10-17	58.8%	7-14	50.0%	7	1	8	0	2	2	2	0	3	9	28	22	15
<b>Total</b>					<b>580:30</b>	<b>363</b>	<b>137-297</b>	<b>46.1%</b>	<b>7-31</b>	<b>22.6%</b>	<b>130-266</b>	<b>48.9%</b>	<b>82-151</b>	<b>54.3%</b>	<b>90</b>	<b>110</b>	<b>200</b>	<b>40</b>	<b>99</b>	<b>61</b>	<b>20</b>	<b>0</b>	<b>66</b>	<b>110</b>	<b>400</b>	<b>356</b>	<b>117</b>
<b>Average</b>					<b>19:21</b>	<b>12.1</b>	<b>4.6-9.9</b>	<b>46.1%</b>	<b>0.2-1.0</b>	<b>22.6%</b>	<b>4.3-8.9</b>	<b>48.9%</b>	<b>2.7-5.0</b>	<b>54.3%</b>	<b>3.0</b>	<b>3.7</b>	<b>6.7</b>	<b>1.3</b>	<b>3.3</b>	<b>2.0</b>	<b>0.7</b>	<b>0.0</b>	<b>2.2</b>	<b>3.7</b>	<b>13.3</b>	<b>11.9</b>	<b>3.9</b>

Season Highs			
Stats	Value	Date	Opponent
Points	27	4/10/22	Azulejos Moncayo CBZ
Minutes	30:37	3/19/22	2. CADET FEMENÍ
Field goals made	10	4/10/22	Azulejos Moncayo CBZ
Field goals attempted	21	2/12/22	2. CADET FEMENÍ
3 pointers made	1	11/13/21	4. NAYOX CBF LLEIDA
3 pointers attempted	4	1/30/22	3. BARÇA CBS-B
2 pointers made	10	6/12/22	Manresa CBF
2 pointers attempted	18	2/12/22	2. CADET FEMENÍ
Free throws made	7	5/1/22	7. CB CORNELLÀ B
Free throws attempted	14	6/12/22	Manresa CBF
Offensive Rebounds	8	5/29/22	2. CADET FEMENÍ
Defensive Rebounds	7	3/19/22	2. CADET FEMENÍ
Rebounds	13	5/1/22	7. CB CORNELLÀ B
Assists	5	4/11/22	2. CADET FEMENÍ
Turnovers	10	2/26/22	2. CADET FEMENÍ
Steals	6	2/26/22	2. CADET FEMENÍ
Blocks	3	2/26/22	2. CADET FEMENÍ

Legend	
MIN	Minutes Played
PTS	Points
PF-PA	Points in favour - Points against
FGM	Field Goals Made
FGA	Field Goals Attempted
FG%	Field Goal Percentage -> $(FGM / FGA) * 100$
3PM	3 Point Field Goals Made
3PA	3 Point Field Goals Attempted
3P%	3 Point Field Goals Percentage -> $(3PM / 3PA) * 100$
2PM	2 Point Field Goals Made
2PA	2 Point Field Goals Attempted
2P%	2 Point Field Goals Percentage -> $(2PM / 2PA) * 100$
FTM	Free Throws Made
FTA	Free Throws Attempted
FT%	Free Throws Percentage -> $(FTM / FTA) * 100$
OREB	Offensive Rebounds
DREB	Defensive Rebounds
REB	Rebounds
AST	Assists
TOV	Turnovers
STL	Steals
BLK	Blocks
SR	Shots rejected
PF	Personal Fouls
PFD	Personal Fouls Drawn
PIR	Performance Index Rating -> $((PTS + REB + AST + STL + BLK + PFD) - ((FGA - FGM) + (FTA - FTM) + TO + PF))$
EFF	Efficiency -> $((PTS + REB + AST + STL + BLK) - ((FGA - FGM) + (FTA - FTM) + TO))$
+/-	Plus Minus